

EPAS IS NOW AVAILABLE TO ORDER



WHAT IS EPAS?

Electronic Power Assisted Steering

HOW DOES EPAS WORK?

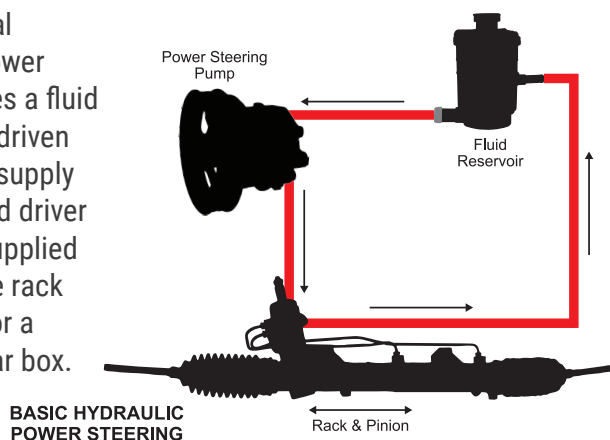
EPAS uses an electric motor to provide steering assist, replacing conventional hydraulic power steering components including: the pump, hoses, fluid, belts, and pulleys with one integrated unit.



VS

HOW DOES HYDRAULIC STEERING WORK?

Conventional hydraulic power steering uses a fluid filled pump driven by a belt to supply pressure and driver control is supplied by either the rack and pinion or a steering gear box.



WHY BBB EPAS?

1

Extensively
Tested

2

OE-Quality

3

Installation
Ready

EPAS PRODUCTS AVAILABLE

Features

- Every unit is fully disassembled, cleaned, and inspected to ensure all components meet strict OE tolerances
- All seals, bellows, boots, and clamps are replaced with OE quality components
- Electrically and electronically tested for input and output parameters to specific diagnostic trouble codes



EPAS RACK AND PINION

A self-contained electric unit that is controlled by an electric module taking inputs from multiple vehicle sensors giving proper assist to the driver via an electric motor for the current vehicle dynamics.



ELECTRIC COLUMN AND MOTOR

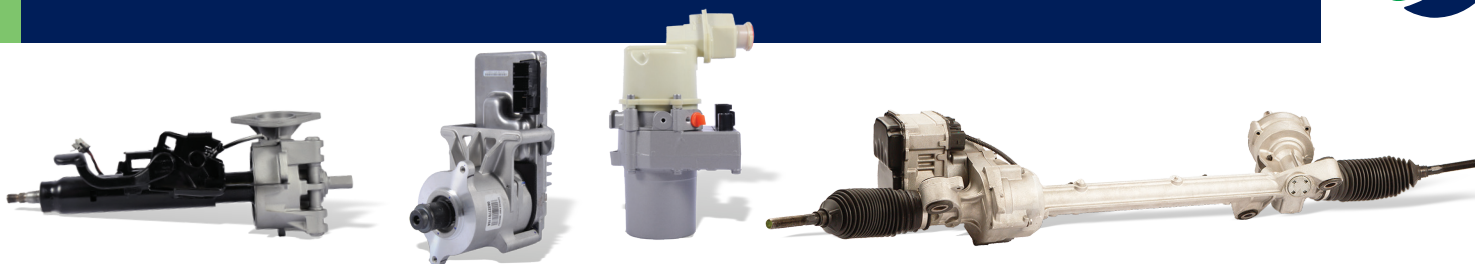
Column Drive Units have a motor and controller attached to the Steering Column and actuate a traditional Manual Rack and Pinion.

ELECTRO-HYDRAULIC POWER STEERING PUMP

Electric Motor driven Hydraulic Pump with a traditional Steering Column and Hydraulic Rack and Pinion – Provides NO Auto-steer and requires fluids and hoses.



EPAS IS NOW AVAILABLE TO ORDER



EPAS IS HERE TODAY

Over 80% of vehicles in production today are equipped with EPAS.

EPAS IS NOT GOING AWAY

In 3 Years, 23% of steering repairs will be EPAS systems.

WHY IS EPAS GROWING?

EPAS allows for:

- Increased Energy Efficiency
- Increased Fuel Economy
- Reduced Vehicle Weight
- Reduced Steering Effort
- Easier Factory Installation
- Advanced Safety System Integration

In a recently conducted study*, over 60% of the technicians surveyed were buying EPAS replacement parts from the OE Dealer, a salvage yard, or online.

THE REASON WHY? They were not aware that EPAS was available in the automotive aftermarket.

**709 technicians and shop owners surveyed around the country.*

The following part numbers are recommended to ensure maximum coverage with the highest turns:

PART #	APPLICATION	DESCRIPTION	VIO
201-0137E	2011-14 FORD TRUCKS-F SERIES, SUPER DUTY PICKUP (2WD & 4WD)	Rack & Pinion	1,342,427
201-0130E	2010-12 FORD-FUSION, LINCOLN-MKZ	Rack & Pinion	738,571
992-0102	2004-12 CHEVROLET-MALIBU, PONTIAC-G6, SATURN-AURA	Motor & Module	1,905,588
201-0136E	2011-14 FORD TRUCKS-F SERIES, SUPER DUTY PICKUP (2WD & 4WD)	Rack & Pinion	191,775
992-0104	2004-12 CHEVROLET-MALIBU, PONTIAC-G6, SATURN-AURA	Motor & Module	1,905,588
980-0102E	2011-16 CHRYSLER-300, DODGE-CHALLENGER, CHARGER, CORONET	Pump	480,479
201-0152E	2012-14 FORD-FOCUS	Rack & Pinion	236,910
201-0143E	2013-16 FORD TRUCKS-FLEX, FORD-TAURUS, LINCOLN TRUCKS-MKT, LINCOLN-MKS	Rack & Pinion	292,539